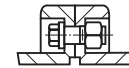
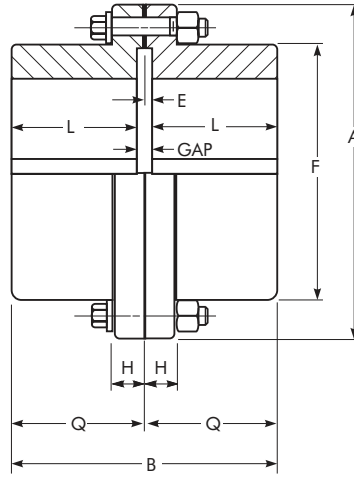


Type G82 Standard Flanged Sleeve

Rigid/Dimensions — Millimeters



Type G81 Shrouded Bolts furnished only when specified on order. Sizes 1060G and 1070G available only as Type G82.

SIZE ★	Torque Rating (Nm) †	Allow Speed rpm ‡	Max Bore (mm) •	Min Bore (mm) ▫	Cplg Wt With No Bore-kg		DIMENSIONS — Millimeters								SIZE ★
					G81	G82	A	B	E	F	H	L	Q	Gap	
1010G	1 140	8000	65	13	4,08	4,54	115,9	84,3	2,5	83,8	14,0	39,6	42,2	5	1010G
1015G	2 350	6500	80	20	8,62	9,07	152,4	97,5	2,5	105,2	19,0	46,2	48,8	5	1015G
1020G	4 270	5600	98	26	13,6	15,9	177,8	121,9	2,5	126,5	19,0	58,4	61,0	5	1020G
1025G	7 470	5000	118	32	24,9	27,2	212,7	152,4	2,5	154,9	21,8	73,7	76,2	5	1025G
1030G	12 100	4400	140	39	40,8	43,1	239,7	180,8	2,5	180,3	21,8	87,9	90,4	5	1030G
1035G	18 500	3900	163	51	61,2	70,3	279,4	209,3	2,5	211,3	28,4	102,1	104,6	5	1035G
1040G	30 600	3600	196	64	95,3	102	317,5	238,8	4,1	245,4	28,4	115,3	119,4	8	1040G
1045G	42 000	3200	216	77	132	141	346,1	269,2	4,1	274,1	28,4	130,6	134,6	8	1045G
1050G	56 600	2900	235	89	188	204	388,9	304,8	5,1	305,8	38,1	147,3	152,4	10	1050G
1055G	74 000	2650	266	102	268	281	425,4	355,6	5,1	334,3	38,1	172,7	177,8	10	1055G
1060G	90 400	2450	290	115	...	336	457,2	386,1	6,6	366,0	25,4	186,4	193,0	13	1060G
1070G	135 000	2150	340	127	...	535	527,0	457,2	8,4	424,9	28,4	220,2	228,6	17	1070G

★ Refer to Page 15 for General Information and Reference Notes.

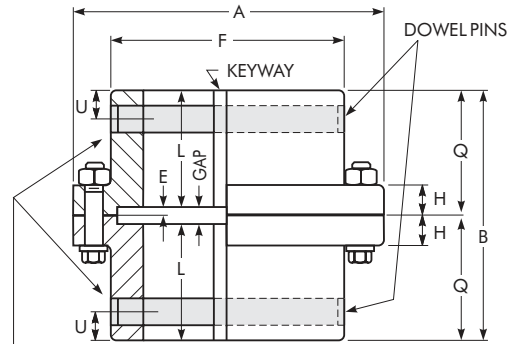
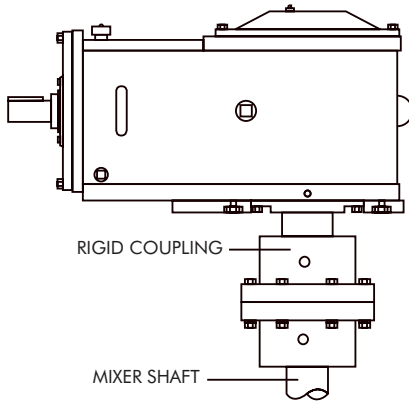
Type GV82 Standard Flanged Sleeve

Rigid Thrust/Dimensions — Millimeters

Type GV82 couplings are used as rigid connections for the low speed shaft of a gear drive and a mixer shaft or suspended load. The coupling carries the torque load, weight of the shaft and impeller, thrust forces and resulting bending moments.

When a rigid coupling is required, the following additional information is necessary.

1. Required thrust capacity and direction of thrust.
2. Radial force at impeller.
3. Distance from the center of coupling fastener flange to the center of the impeller.
4. Weight of shaft and impeller.



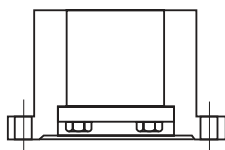
X-DIAMETER PILOT HOLE THRU ONE WALL IN EACH HUB AT 90° TO KEYWAY FOR W-DOWEL. AFTER MOUNTING HUBS, DRILL AND REAM THRU FOR 0,0254 mm TIGHT TO 0,0127 mm LOOSE DOWEL FIT. STAKE DOWELS IN PLACE.

SIZE *	Torque Rating (Nm) †	Hub Bore Range (mm) °	Cplg Wt With No Bore-kg	DIMENSIONS — Millimeters											SIZE *	
				A	B	E	F	H	L	Q	U	W		X		Gap
												Dowel Dia x Length	Dowel Hole-Dia +.0127 - .0000			
1010GV	1 140	34,9 – 57,2	4,5	115,9	84,3	2,5	83,8	14,0	39,6	42,2	9,7	9,5 x 81,8	9,5	8,7	5	1010GV
1015GV	2 350	41,3 – 69,8	9,1	152,4	97,5	2,5	105,2	19,0	46,2	48,8	12,7	12,7 x 103,1	12,7	11,9	5	1015GV
1020GV	4 270	63,5 – 82,6	15,9	177,8	121,9	2,5	126,5	19,0	58,4	61,0	19,1	19,1 x 124,0	19,0	18,3	5	1020GV
1025GV	7 470	82,6 – 101,6	27,2	212,7	152,4	2,5	154,9	21,8	73,7	76,2	25,4	25,4 x 151,9	25,4	23,8	5	1025GV
1030GV	12 100	88,9 – 114,3	43,1	239,7	180,8	2,5	180,3	21,8	87,9	90,4	28,4	28,6 x 176,8	28,5	27,0	5	1030GV
1035GV	18 500	101,6 – 133,4	70,3	279,4	209,3	2,5	211,3	28,4	102,1	104,6	31,8	31,8 x 208,3	31,7	30,2	5	1035GV
1040GV	30 600	114,3 – 158,8	102	317,5	238,8	4,1	245,4	28,4	115,3	119,4	35,1	34,9 x 241,8	34,9	33,4	8	1040GV
1045GV	42 000	127,0 – 177,8	141	346,1	269,2	4,1	274,1	28,4	130,6	134,6	38,1	38,1 x 270,3	38,1	36,5	8	1045GV
1050GV	56 600	146,0 – 196,8	204	388,9	304,8	5,1	305,8	38,1	147,3	152,4	44,5	44,4 x 301,2	44,4	42,9	10	1050GV
1055GV	74 000	146,0 – 215,9	281	425,4	355,6	5,1	334,3	38,1	172,7	177,8	44,5	44,4 x 330,2	44,4	42,9	10	1055GV
1060GV	90 400	171,4 – 235,0	336	457,2	386,1	6,6	366,0	25,4	186,4	193,0	50,8	50,8 x 361,2	50,8	49,2	13	1060GV
1070GV	135 000	171,4 – 273,1	535	527,0	457,2	8,4	424,9	28,4	220,2	228,6	50,8	50,8 x 420,6	50,8	49,2	17	1070GV

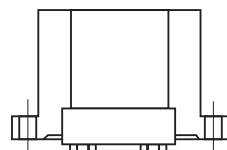
★ Refer to Page 15 for General Information and other Reference Notes.

◆ Dowels: diameters, +0,000,-.0,025 mm material, AISI 4140 hardness, 310-350HB; furnished by the Factory. Customer is responsible for checking and furnishing driven shaft with satisfactory capacity.

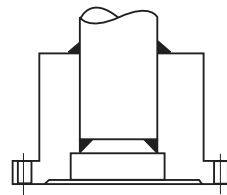
OTHER AXIAL RETENTION OPTIONS — AVAILABLE ON TYPE GXVF (Refer to the Factory)



KEEPER PLATE



REGISTERED KEEPER PLATE



WELDED