



1CD

Series 1CD SURESTOP Spring-Applied Electromagnetically-Released Caliper Brakes



For Dry Operation

SURESTOP™ brakes are engaged by coil springs and disengaged by an electromagnetic force. The SURESTOP can be used in rotational or linear motion applications for either dynamic braking of an inertia, or as a holding brake.

Typical Applications

- Machine Tools
- Test Equipment
- Braking Linear Motion
- Positioning Systems (Automation)

Features

- Spring-applied, engages and remains engaged if power fails
- Adjustable air gap, increases pad life and allows for the accommodation of different disc thicknesses
- Floating mount minimizes drag
- Low power consumption, low running costs
- Electromagnet remote from shaft eliminates shaft magnetism

For Technical Assistance Call

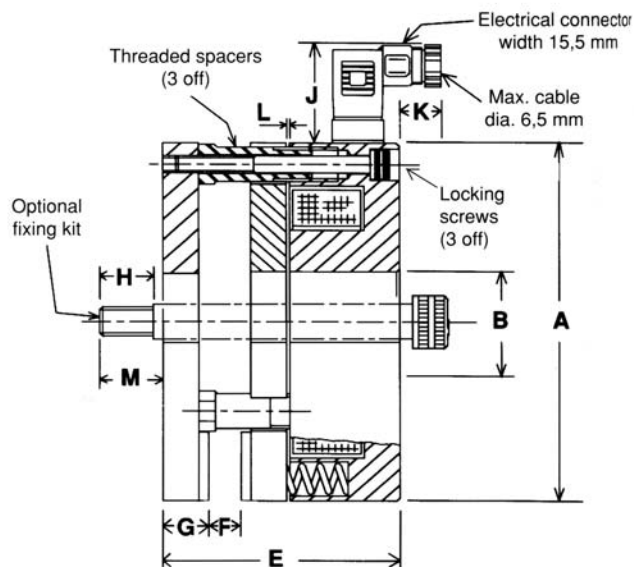
800-825-9050

 **Matrix**[®]
International
An Altra Industrial Motion Company



S.I.T., S.A. | Tfno. 943 457200 | www.sitsa.es | atencioncliente@sitsa.es

MODEL		1CD 040	1CD 070
Performance Data			
Static Braking Force (Bedded)	N	800	3300
Dynamic Braking Force (Bedded)	N	720	2950
Power Consumption @ 20°C	Watts	31	72
Weight	kg	4.5	18.2
Dimensional Data (all dimensions in mm)			
Diameters			
A		125	210
B		36	70
Lengths (all dimensions in mm)			
E (ref)		73	106
F (nominal disc or rail thickness)		10.0	12.7
G (ref)		14	15
H		16.4	18.4
J		32.5	32.5
K		13.0	5.6
L (Air Gap Setting)	(Nominal)	0.25	0.35
	(Max)	0.75	1.00
M (ref)		20	25
Fixing Dimensions			
Fixing Holes for Shoulder Screws (2 off)	Size	M10	M12
	P.C.D.	110	190



Matrix International
449 Gardner St. • South Beloit, IL 61080
815-389-6274 • Fax: 815-389-2582
E-mail: matrix.usa@altramotion.com
www.matrix-international.com

P-1788-13-MX 5/09 Printed in USA

